

NAME \_\_\_\_\_ Date \_\_\_\_\_

UYA                      WHATEVER IT TAKES                      100% EVERYDAY                      MRS. MCKAY

**CHAPTER 5 TEST REVIEW PACKET**

TEST THURSDAY FEBRUARY 28, 2013 – SHOW ALL WORK

I. **VOCABULARY** – Define the following:

INDEPENDENT VARIABLE

RATE OF CHANGE

DEPENDENT VARIABLE

UNIT RATE

ZERO SLOPE

DIRECT VARIATION

UNDEFINED SLOPE

POSITIVE SLOPE

II. **INTERPRETING GRAPHS**

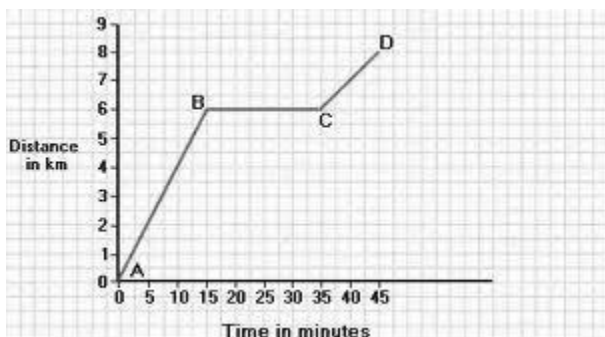
Draw a mini-graph of the following:

Increasing Graph

Decreasing Graph

Constant Graph

What could the following parts of the graph show? Make up a scenario.

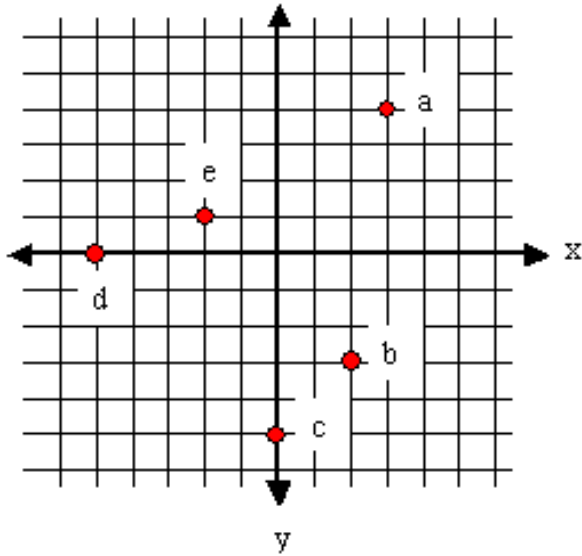


A – B

B – C

C – D

III. GRAPHING COORDINATES



What are the coordinates of point C?

What are the coordinates of point D?

What quadrant is point A in?

What quadrant is point B in?

What quadrant is point E in?

IV. DIRECT VARIATION

Answer the **TWO** questions:

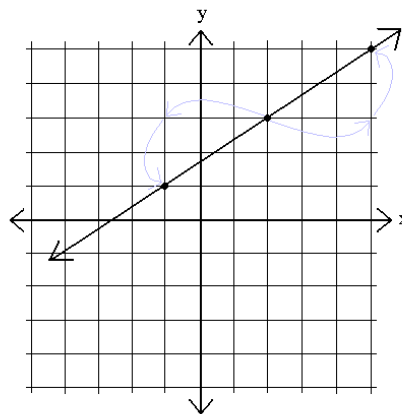
1. Is there direct variation?
2. If YES, then what is the constant of direct variation?

**EQUATION** - LOOK FOR  $Y = k X$

1.  $y = 2x$

2.  $4y = 8x$

**GRAPHING** - LOOK FOR SLOPE



**TABLES** - LOOK FOR  $k = \frac{Y}{X}$

<b>Time (x)</b>	1	2	3	4
<b>Miles (y)</b>	4	8	12	16